

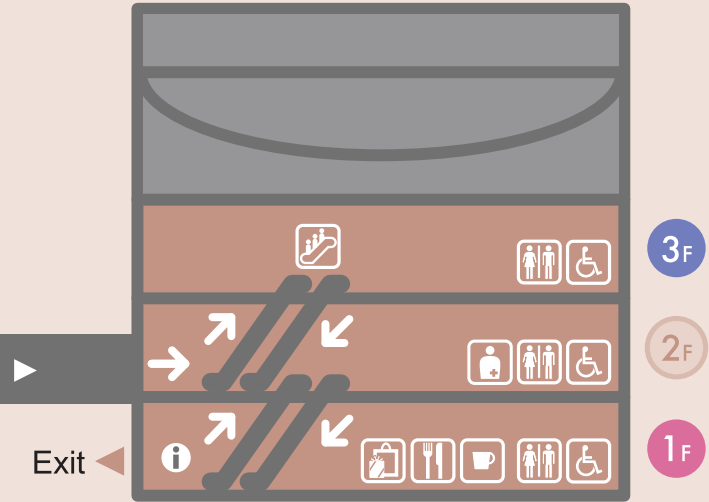
Human Renovation Institution



1995, a 7.3-magnitude
Awaji Island in Hyogo Prefecture occurred.
that many elderly persons called home and wrecked
inherited the experiences and lessons of the Great Hanshin-Awaji
prevent and reduce disasters. Visitors acquire accurate knowledge
told by earthquake survivors.

East Building

East Building Usual route



Facility Information

- **Open Hours**
9:30–17:30 (admission until 16:30)
※Open hours are subject to change. Please check our website before visiting the DRI.
- **Closed Days**
Every Monday (Tuesday if Monday is a national holiday or substitute holiday)
Year-end and New Year Holidays
※Open throughout Golden Week Holidays (from April 28 to May 5)
※The DRI may be closed temporarily. Please check our website before visiting it.

	Adults	College students	High school students and younger	
All Floors	¥650 (¥500)	¥450 (¥350)	Free	Free admission every 17th of the month! ※18th of the month if the DRI is closed on the 17th.
Only East Bldg.	¥300 (¥250)	¥200 (¥150)	Free	

- **Required time to view (Standard)**
All Floors : 2 hours
Only East Bldg. : 1 hour
- **Museum rules**
Follow the arrows through the museum. Smoking is not allowed in the museum. Please do not use mobile phones. Food and drink are allowed only in the restaurants. If you are under the influence of alcohol or disturb other patrons, you may be asked to leave. Photography is prohibited in some areas such as 4F of the West Building and Heart Theater on 1F of the East Building. For more information, please ask the staff.

	Up to 1 hour	Up to 2 hour	Up to 3 hour	
Visitors	¥250	¥400	¥550	¥200 every 30 minutes beyond 3 hours
Other than visitors	¥400	¥200 every 30 minutes beyond 1 hour		

※Please show your admission ticket and parking ticket at the General Information desk.
Please note that parking discount are not available if you do not have an admission ticket.

Access

Railways

- From Hanshin IWAYA Station / KASUGANOMICHI Station:
About 10 minutes' walk southbound.
- From JR NADA Station, South Exit: About 12 minutes' walk southbound.
- From Hankyu OJI KOEN Station, West Exit:
About 20 minutes' walk southbound.

Car

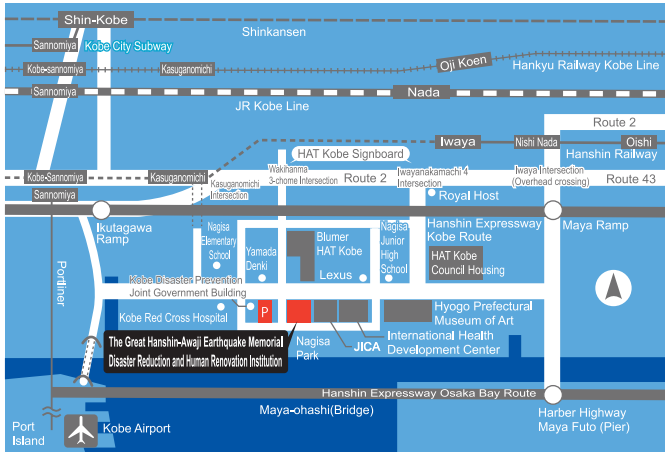
- From the MAYA Ramp on the Hanshin Expressway Kobe Route: About 4 minutes.
- From the IKUTAGAWA Ramp on the Hanshin Expressway Kobe Route: About 8 minutes.
- From Hankyu/Hanshin Kobe-Sannomiya Stations, JR SANNOMIYA Station: About 10 minutes (via Route 2).
- From JR SHIN-KOBE Shinkansen Station: About 15 minutes.

Bus

- Hanshin Bus: 14 min. from JR Sannomiya Station to DRI
- Kobe City Bus (Route 101): About 17 min.
from JR Sannomiya Station to HAT Kobe/DRI
- Kobe City Bus (Route 29): JR Sannomiya Station
A.M. : About 24 min. (Sannomiya →Maya Futo (Pier) → HAT Kobe)
P.M. : About 15 min. (Sannomiya →HAT Kobe → Maya Futo (Pier))

From Kobe Airport

- By Portliner, KOBE AIRPORT Station to SANNOMIYA Station: About 18 minutes.
From there, transfer to bus or train as listed above.
- By Car: About 20 minutes via Route 2.



Hyogo Earthquake Memorial 21st Century Research Institute
The Great Hanshin-Awaji Earthquake Memorial
Disaster Reduction and Human Renovation Institution
1-5-2, Wakinohama Kaigan-dori, Chuo-ku, Kobe City 651-0073
(in HAT Kobe) TEL.078-262-5050 (Exhibition room)
TEL.078-262-5058 (Library) URL: <https://www.dri.ne.jp/en/>

英語 Ver.17 (2025.4)



The Great Hanshin-Awaji Earthquake Memorial
Disaster Reduction and Human Renovation Institution
The Great Hanshin-Awaji Earthquake Memorial
Disaster Reduction and Human Renovation Institution



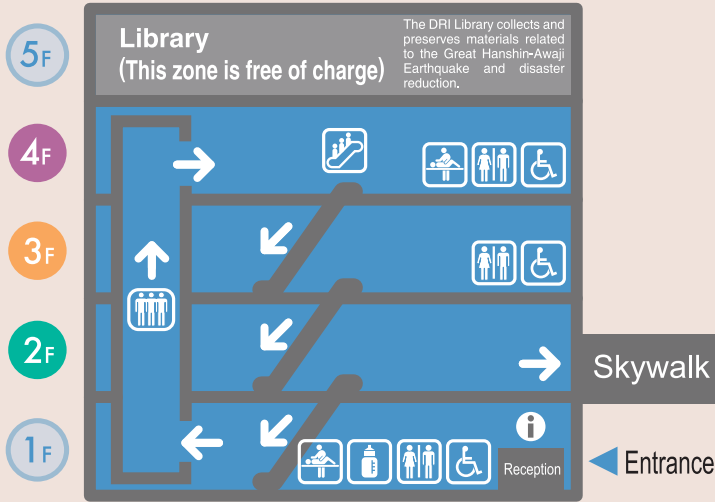
Welcome to the
Disaster Reduction and

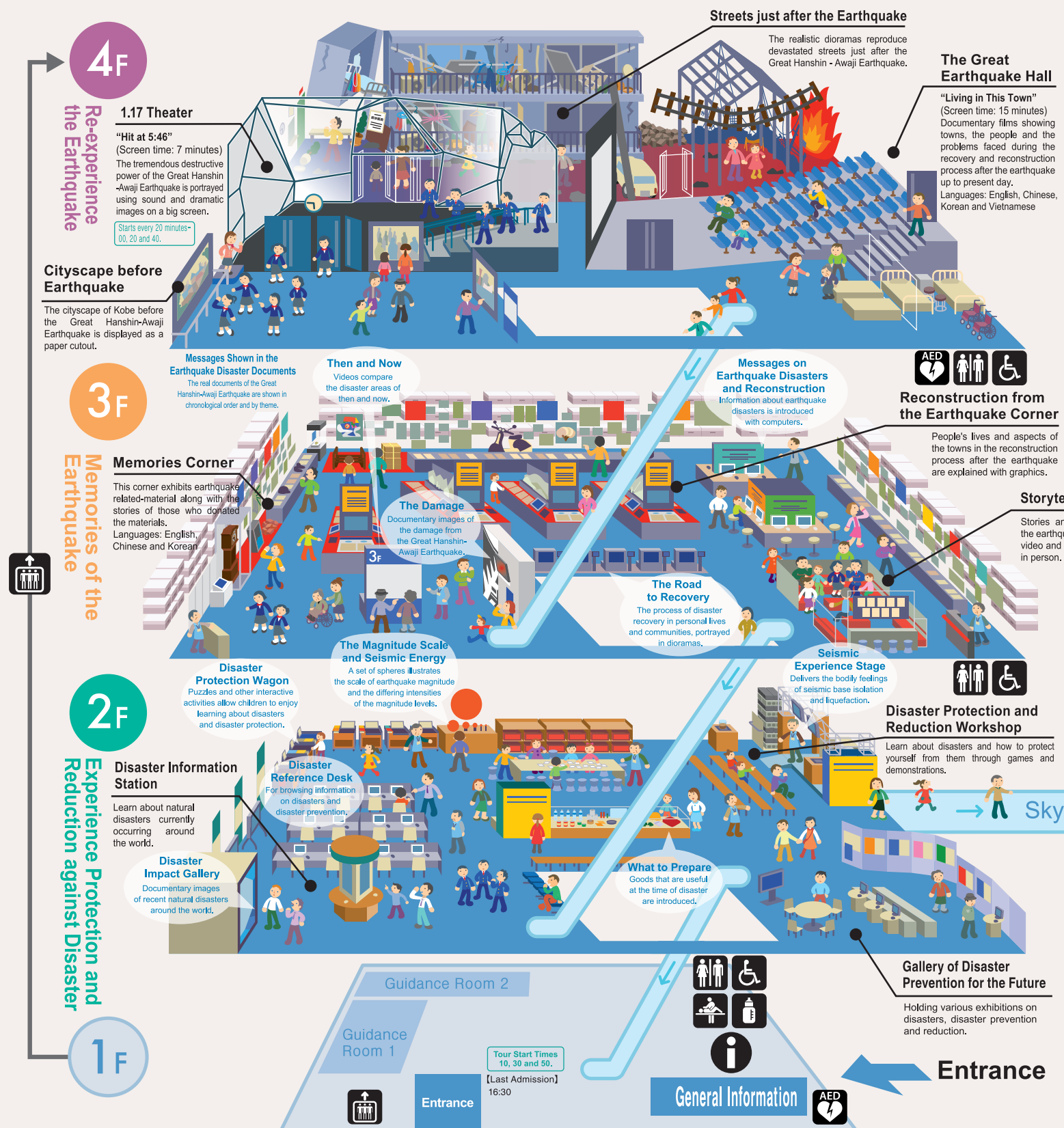


At 5:46 of January 17,
earthquake centered in the northern part of
The earthquake hammered the nearby metropolitan area
enormous damage including more than 6,400 dead.
The Disaster Reduction and Human Renovation Institution has
Earthquake so that it can disseminate information necessary to
about disasters and their prevention from exhibits, films, and stories

West Building

West Building Usual route





Disaster Wall

This wall shows you how natural disasters occur where natural phenomena intersect with people's lives.

