



ひょうごフィールドパビリオン

Our Field, Our SDGs  
私たちのフィールド、私たちのSDGs



The Great Hanshin-Awaji Earthquake Memorial  
Disaster Reduction and  
Human Renovation Institution

We won't forget

1995.1.17



# Telling the 21st century and the rest of the world about Awaji Earthquake and the importance of disaster prev



**Yoshiaki Kawata**

Disaster Reduction and Human  
Renovation Institute Executive Director

Nowadays, natural disasters are frequent, occur anywhere and are more serious than ever, leaving widespread damage in their path. In the wake of past events, the entire world is asking what needs to be done to build a resilient society. The Disaster Reduction and Human Renovation Institution (DRI) is working to answer that.

The DRI was established by Hyogo Prefecture in April 2002 with funding by the central government of Japan. Its mission is to help build a resilient society that ensures the safety and security of communities and gains their cooperation in disaster risk reduction, by inheriting the experiences and lessons of the Great Hanshin-Awaji Earthquake and other disasters that followed in Japan and overseas, shaping a disaster management mindset, improving the disaster preparedness of communities and helping to develop disaster prevention policies.

As a disaster museum, the DRI tells the story of what happened in the Great Hanshin-Awaji Earthquake using formats that anyone will find easy to understand. Furthermore, it promotes practical research into disaster risk reduction and helps to develop human resources needed in disaster management. Moreover, in line with the intentions laid out in the Sustainable Development Goals (SDGs, 2015-30) set by the UN and the pandemic due to COVID-19, the DRI is active as a network hub for disseminating information on disaster prevention, reduction and resilience around the world. Taking the opportunity of the 20th anniversary of its establishment in 2022, the DRI will promote the 100-Year Plan for Disaster Prevention Picture Books that contributes to joint research on domestic disasters such as the Nankai Trough Giant Earthquake and Tokyo Inland Earthquake, and disaster prevention education in Japan and overseas.

## Six Functions of the Disaster Reduction and Human Renovation Institution





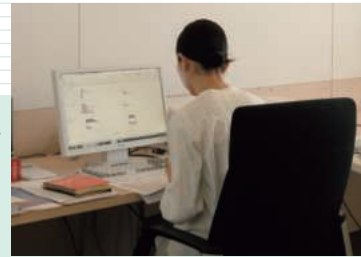
# At the experiences and lessons of the Great Hanshin- ention, disaster risk reduction and disaster resilience

## Action Research on Disaster Reduction & Development of Disaster Reduction Professionals

In the pursuit of a disaster reduction awareness within society, we hope to provide practical research for the improvement of disaster reduction abilities.

### Research Fields

- ① Governmental disaster management
- ② Emergency evacuation measures
- ③ Search and rescue measures
- ④ Secondary disaster measures
- ⑤ Resources
- ⑥ Information measures
- ⑦ Volunteers
- ⑧ Infrastructure
- ⑨ Care for victims
- ⑩ Local economy



### Important Areas of Research

Attempting to plan for the next 30 years, we take present social demands into consideration along with our overall mission statement. We do this by continuous and systematic updating our organizational roadmap every 5 years to reflect "important areas of research" we should be addressing.

- ① Optimization of post disaster response as it relates to individuals and society
- ② Improvement of inter-organizational cooperation policies to cover disasters that span wide areas
- ③ Building strategies for restoration and recovery of local communities

### Core Research Projects

Regarding the aforementioned "Important Areas of Research," the DRI takes up the agendas and issues that should be addressed by local governments with regard to expected major disasters as its core research theme, and promotes them over a fixed term.

### Special Research Projects

"Special Research Projects" are flexible and mobile research themes established to dig deeper into the development of related areas of the "Important Areas of Research." Groups of or all researchers are involved in this project over fixed terms.

### Fostering researchers

Candidates with a Master or Ph.D. degree are eligible for employment for 3-5 years as a researcher (full-time). Under the direction of senior research advisors, they engage in practical disaster reduction research and participate in the various other projects of the DRI geared towards developing them as practical disaster reduction experts.



### Senior Research Advisors

Fumio Takeda	Director, Disaster Risk Management, National Graduate Institute for Policy Studies; Vice-president, Fukushima College	Noboru Yamazaki	Professor, Research Institute of Disaster Management and Emergency Medical System, Kokushikan University
Kimiro Meguro	Dean, Graduate School of Interdisciplinary Information Studies, University of Tokyo	Keiko Tamura	Professor, Risk Management center, Headquarters for Risk Management, Niigata University
Toshio Takatorige	Professor, Faculty of Social Sciences / Graduate School of Societal Safety Sciences, Kansai University	Kenji Koshiyama	Professor, Faculty of Social Sciences, Kansai University
Eiichi Nakakita	Vice President of Kyoto University and Professor at the Disaster Prevention Research Institute, Kyoto University	Yu Hiroi	Professor, Research Center for Advanced Science and Technology (RCAST), University of Tokyo
Kenji Watanabe	Professor, Graduate School of Social Engineering, Nagoya Institute of Technology		

### Researchers

Reina Hayashida (Chief Researcher)	[Field of Specialization] Research on Local Government Restoration Activities from Disasters, Preservation and Earthquake Disaster Material Analysis	Keigo Matsumura (Researcher)	[Field of Specialization] Disaster Countermeasures Legislation
Mariko Yamazaki (Researcher)	[Field of Specialization] Support for People Who Require Special Attention in Disasters, Victim Support, Cooperation between Disaster Prevention and Welfare	Takahisa Minami (Researcher)	[Field of Specialization] Evacuation Behavior, Urban Disaster Prevention, Community Development, Disaster Prevention and Learning
Akiko Yamaguchi (Researcher)	[Field of Specialization] Weather Disasters, Communicating Information on Disaster Prevention	Yuki Mochihara (Researcher)	[Field of Specialization] Social Welfare, Welfare for Persons with Disabilities, Interpersonal Assistance, Improving Well-Being of Persons with Disabilities, Art Activities for Persons with Disabilities
Yuichiro Ikehata (Researcher)	[Field of Specialization] Philosophy and Ethics, Public Policy Theory, Disaster Prevention Administration, Rescuers and Ethics	Yuta Sugihara (Research Investigator)	[Field of Specialization] Disaster Prevention Administration, Civil Engineering Administration (dispatched from Tottori Prefecture)

## West Building

## West Building Exhibition Zone

Library

### 4F Re-experience the Earthquake

#### 1 1.17 Theater

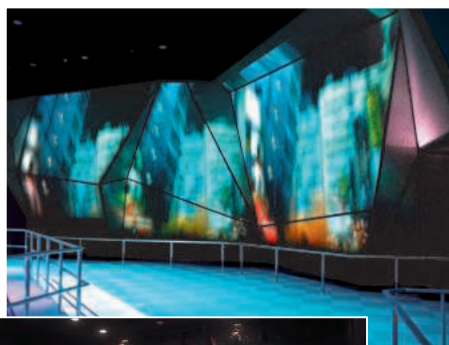
[Screen time: 7 minutes]

The tremendous destructive power of the Great Hanshin-Awaji Earthquake is portrayed using sound and dramatic images on a big screen.



#### 2 Streets just after the Earthquake

The realistic dioramas reproduce devastated streets just after the Great Hanshin-Awaji Earthquake.



#### 3 The Great Earthquake Hall

[Screen time: 15 minutes]

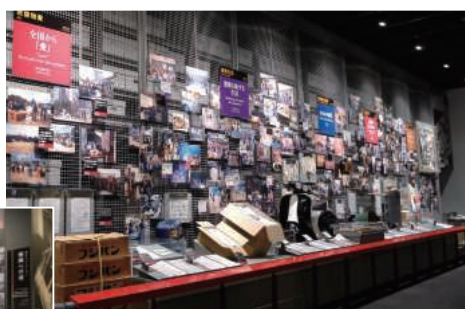
Documentary films showing towns, the people and the problems faced during the recovery and reconstruction process after the earthquake up to present day.



### 3F Memories of the Earthquake

#### 4 Memories Corner

This corner exhibits earthquake-related material along with the stories of those who donated the materials.



#### 5 Reconstruction from the Earthquake Corner

People's lives and aspects of the towns in the reconstruction process after the earthquake are explained with graphics.

#### 6 Storytellers' Corner

Stories and experiences of the earthquake are shown by video and told by storytellers in person.



### 2F Experience Protection and Reduction against Disaster



#### 7 Disaster Information Station

Learn about natural disasters that have occurred around the world.

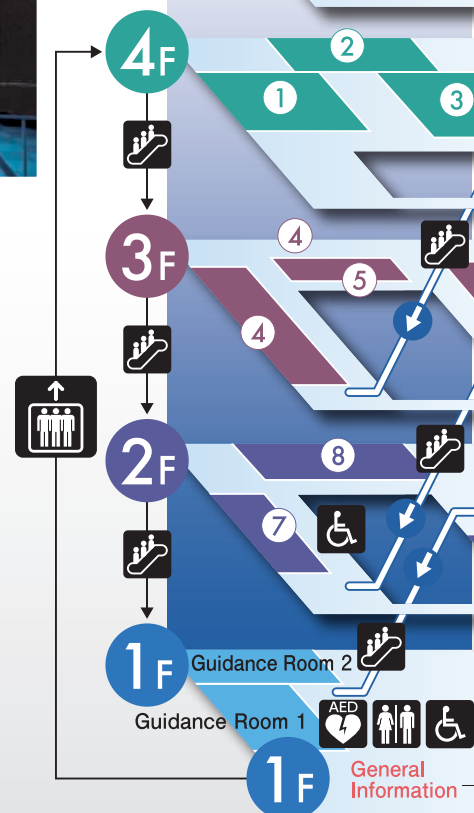
#### 8 Disaster Protection and Reduction Workshop

Learn about disasters and how to protect yourself from them through games and demonstrations.



#### 9 Gallery of Disaster Prevention for the Future

Exhibitions of various materials related to disaster prevention and mitigation held.



※A volunteer or attendant will guide you through the buildings.

### Library Material inspection • Earthquake Disaster Study This zone is free

■ **Open:** 9:30~17:30

■ **Closed:** When the Institute is closed; during the year-end and New Year holidays.

The DRI Library collects and preserves materials related to the Great Hanshin-Awaji Earthquake and disaster reduction.

#### Viewing Materials

- Secondary materials (Books, DVDs, etc.)  
Please feel free to look through materials in the open-stack library.
- Primary materials (Physical materials from the earthquake)

To retrieve information about primary materials, you can use computers in our library or online search system. If you want to view information or materials, please contact us in advance.  
Search page:  
<http://lib.dri.ne.jp/search/>

\*Please use the north elevator in the West Building.

#### Lending of materials:

Materials are not lent out in principle.  
However, Video materials or photos can be lent out in accordance with your purpose of use. Please consult the library staff.

#### Reference:

The staff provides consultation on information and materials related to earthquakes and disaster protection.

#### Yoshiyuki KAWATA collection

The library contains materials and achievements of academic research by the Director of DRI.

Please visit the main library counter if you wish to see the KAWATA collection.



### 1F Guidance Room

Earthquakes & Disaster Study Programs

By Appointment Only

#### Program 1

Actual experiences of the earthquake and things to be kept in mind as told by "storytellers," the people who survived the earthquake.

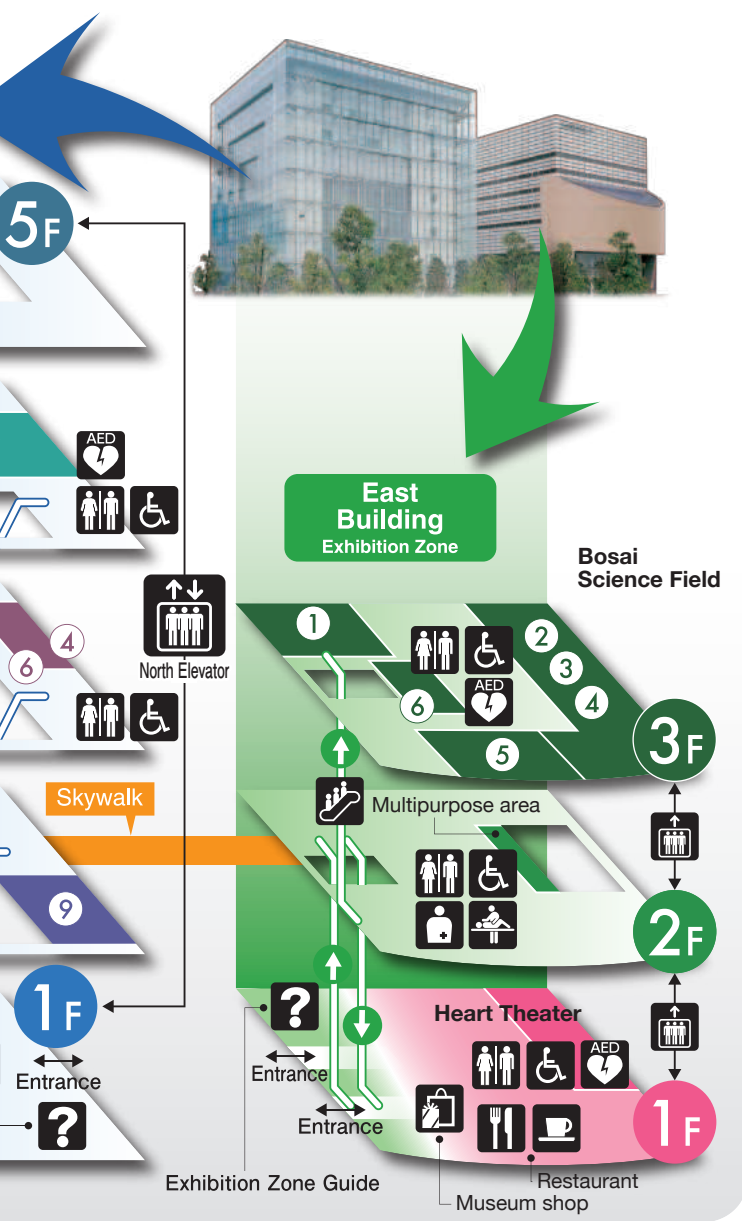
#### Program 2

A disaster risk reduction seminar by DRI researchers (For elementary and junior high school students, On weekdays only)





## East Building



### 3F Bosai Science Field

The latest knowledge and information on disaster reduction and the ability to prepare for natural disasters.

People of all ages can learn the latest disaster reduction knowledge and so that they can better prepare for natural disasters. For example, If you find yourself in an earthquake or other disaster situation, what actions should you take to protect the lives of you and your loved ones? Now is the time to acquire the ability to think, judge and act for yourself in a disaster.

#### ① Disaster Wall What are natural disasters?



This Wall shows you how natural disasters occur where natural phenomena intersect with people's lives.

#### ② Geo & Sky Hall Why do disasters occur?

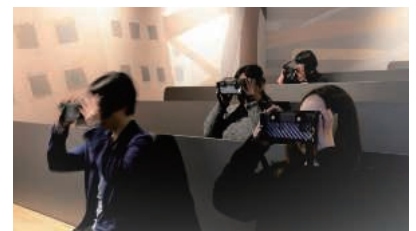
Learn the mechanisms of natural phenomena and experience how they relate to natural disasters.



#### ③ Hazard VR Port

What happens in a disaster?

Experience what it's like to go through an earthquake, tsunami, storm and flood through a VR headset.



#### ④ Mission Room What should you do in a disaster?

Undergo training in the realistically reproduced house and convenience store. You can train to judge the situation by yourself and know when to evacuate.



#### ⑤ Question Cube

Is that action really the best?

Answer video quizzes that let you experience various situations that occur during a disaster, and find out the best way to save your life.



#### ⑥ Discovery Lounge

What are you going to do now?

Leave a message about what you are determined to do or think others should do to mitigate possible disasters in the future.



2F

This multipurpose area introduces advanced disaster prevention and mitigation efforts, etc.

"Graphical Digest of 106 Lessons Learned from the Great Hanshin-Awaji Earthquake" (Updated in 2020)



1F

#### Heart Theater

Flee - To Protect Your Precious Life  
Narrative: Hiro SHIMONO (voice actor)

Think of your being in a disaster...  
To escape is to live...  
[Screen time: 15 minutes]



©NHKエンタープライズ

#### ○Museum shop



#### ○Restaurant



## Training of Disaster Management Practitioners

### Professional training on disaster management

“Specialist Training in Disaster Management” is held for personnel responsible for disaster prevention in regional public organizations.

#### [Course features]

- Practical training curriculum based on lessons learnt from the Great Hanshin-Awaji Earthquake and other disasters.
- Systematically covers necessary fields for large-scale disaster management.



Courses	Objectives	Target
Top Forum	Based on the latest research results and information on national disaster risk reduction, the heads of local governments discuss the required responses for future major disasters and review how the Mayors ought to behave and manage at emergency situation.	Governor of Prefecture Mayor of Municipal Government
Management Course Basic	This course is designed to get new and inexperienced disaster management staff quickly up to speed, by systematically teaching basic and practical disaster countermeasures for each department based on the experiences of the Great Hanshin-Awaji Earthquake and other disasters.	Local government staff for disaster management with less experience
Management Course Expert	Through exercise and concrete examples of disaster risk reduction, this course strengthens the capability to understand ways to cope with large-scale disasters comprehensively where various countermeasures should be taken.	Senior local government staff for disaster management
Management Course Advanced	We hope to learn from past disaster cases about policy-orientated decision-making issues that may arise when future large-scale disasters strike. In this way, we want to help governors and mayors improve the ability of their governments and governed areas to reduce disaster risks.	Senior local government staff responsible for disaster management

### Intensive Course

Focusing on specific theme and central purpose, several times a year we conduct intensive courses related to disaster management which are specially designed to improve the ability of individuals to deal with disaster situations.

## Headquarters Survey / Assistance in Disaster Response

In the event of a large-scale disaster, the DRI can, upon request, promptly dispatch specialists with practical know-how and rich experience in disaster risk reduction to disaster management headquarters in the stricken area, to survey the present situation and problems, and provide technical advice on how to respond to future disaster.

### Support Team

- Team leader (Executive Director or Deputy Executive Director of the DRI or the like)
- Senior researchers and visiting researchers of the DRI or the line
- Researchers of the DRI
- Liaison/coordination staff
- Networking with experts in other relevant fields



### Experts' Advice

- Providing information for decision making
- Information analysis and judgment
- Estimation of the extent of entire damages



## Exchange and Networking

In order to enhance the function of the Centre, several international disaster prevention organizations occupy the East Building.

### Tenants Information

#### General Incorporated Foundations Asian Disaster Reduction Centre (ADRC)

Founded in 1998 to promote multinational disaster reduction cooperation for areas of Asia prone to disasters. Its main work is the collection and distribution of disaster information, personnel training, and community based disaster reduction programs.

#### International Recovery Platform (IRP)

Established in 2005 following the 2<sup>nd</sup> World Conference on Disaster Reduction held in Hyogo. As an international cooperation framework for promoting "Better Recovery" from disaster, the IRP cooperates with the Japanese government, Hyogo prefectural government, United Nations and other international agencies that have operations for promoting the Sendai Disaster Prevention Framework, including collecting and disseminating knowledge of disaster recovery, developing recovery support tools and human resource training.

#### United Nations Office for Disaster Risk Reduction (UNDRR) Kobe Office

The UNDRR opened its "UNDRR Office in Japan" in 2007, in Kobe, Japan. UNDRR is promoting the Sendai disaster prevention framework (2015-2030) as a successor to the Hyogo action framework and building international cooperation in disaster prevention and a culture based on disaster prevention, disaster reduction.

#### United Nations Office for the Coordination of Humanitarian Affairs (OCHA) Kobe Office

OCHA is a United Nations' agency that coordinates urgent humanitarian assistance activities by national and international organizations, when a natural disaster or conflict occurs in some part of the world. The OCHA Kobe Office that was opened in 2001 helps to effectively implement humanitarian efforts in partnership with relevant agencies located in Japan. At the same time, it also engages in awareness campaigns concerning international humanitarian issues.

#### Asia-Pacific Network for Global Change Research (APN)

Established in Kobe in 1999, as an inter-governmental network for the promotion of international joint research relating to global changes affecting the Asia-Pacific region. It works to deal with climate change, support research activities on biodiversity, develop the scientific potential of developing nations, strengthen links between science and policy, as well as makes efforts toward Sustainable Development Goals (SDGs).

#### Public Interest Incorporated Foundation, International EMECS Centre (EMECS)

Established in 1994 as an international organization following the 1st International Conference on Environmental Management of Enclosed Coastal Seas (EMECS) that was held in Kobe. The centre holds international conferences, conducts survey research and exchanges information on enclosed coastal seas, in order to promote environmental conservation and the proper use of the enclosed coastal seas.

#### Public Interest Incorporated Association, The Association for the Environmental Consecration of the Seto Inland Sea

The Association promotes activities for the environmental conservation of the Seto Inland Sea, a common heritage of all the people of Japan, and a place of unparalleled scenic beauty and a treasure house of fishery resources. The Association, established in 1977, promotes consideration and increased awareness, as well as gathers and provides information, surveys surveys, and research relating to the environmental conservation of the Seto Inland Sea.

#### Public Interest Incorporated Foundation, Institute for Global Environment Strategies (IGES) Kansai Research Centre

Established in 2001 as a research hub for the Institute for Global Environmental Strategies (IGES), an organization that promotes practical policy research for the realization of sustainable development in the Asia-Pacific region. In its research activities, the centre focuses on the actions of businesses that promote low carbon technology transfer to emerging nations, under the theme of "Industry and Environment"

#### Graduate School of Disaster Resilience and Governance, University of Hyogo

Established in 2017 to draw on the experience and lessons from the 1995 Great Hanshin-Awaji Earthquake garnered over two decades of recovery and reconstruction and to address issues arising from the 2011 Great East Japan Earthquake and Tsunami. Practical education and research are conducted in a distinctive Hyogo Prefecture style to train specialists capable of leading programs in disaster resilience and governance.

#### Disaster Prevention Leadership Education Division, Global Leader Education Center, University of Hyogo

The University of Hyogo is taking over the Education and Research Center for Disaster Reduction and reopening it as the Disaster Prevention Leadership Education Division, Global Leader Education Center in FY 2024. Here, we will promote disaster prevention education with our Disaster Prevention Leader Education Program for undergraduate students to deepen their knowledge of disaster mitigation and recovery and to acquire practical response skills.

#### Public Interest Incorporated Foundation, Hyogo Earthquake Memorial 21st Century Research Institute

Established in 2006, integrating two think tanks, which took a leadership role in regional planning and creative reconstruction. The institute carries out research and study, announces its findings and makes policy proposals about the local and political issues regarding "a safer and more secure society" and "the realization of a coexisting society," problems confronting a modern society that were made clear by the Great Hanshin-Awaji Earthquake.

### Disaster Reduction Alliance (DRA)

Conveniently located in Kobe New Eastern City Centre (HAT Kobe), the Head Quarters of the Kobe Disaster Reduction Alliance, which consists of environmental, medical, and health-related organizations (Currently 19 organizations) as well as internationally active disaster reduction related organizations, is headed by the Disaster Reduction and Human Renovation Institution to internationally promote disaster reduction and human resource development activities via annual forums, etc.



#### (Participating organizations)

Asia-Pacific Network for Global Change Research (APN)  
Asian Disaster Reduction Center (ADRC)  
Kobe Local Meteorological Observatory  
Japanese Red Cross Kobe Hospital  
International EMECS Centre (EMECS)  
Kansai International Centre of the Japan International Cooperation Agency (JICA)  
International Recovery Platform (IRP)  
United Nations Office for Disaster Risk Reduction (UNDRR) Kobe Office  
United Nations Office for the Coordination of Humanitarian Affairs (OCHA) Kobe Office  
World Health Organization Centre for Health Development (WHO)  
Institute for Global Environment Strategies (IGES) Kansai Research Centre  
Hyogo Branch of the Japanese Red Cross Society (JRCS)  
Disaster Reduction and Human Renovation Institution (DRI)  
Hyogo International Association (HIA)  
Hyogo Institute for Traumatic Stress (HITS)  
Hyogo Emergency Medical Center (HEMC)  
Graduate School of Disaster Resilience and Governance, University of Hyogo  
Hyogo Earthquake Memorial 21st Century Research Institute (Hem21)  
Hyogo Earthquake Engineering Research Center (E-Defense)

### Facilities

	West Building	East Building
Construction	Earthquake-resistant steel construction 7 floors above ground, 1 floor below ground, 1 floor of rooftop structures	Earthquake-resistant steel construction 7 floors above ground, 1 floor below ground, 1 floor of rooftop structures
Exhibition zone	F1 - F4	F1 - F3
Building area	1,887.80㎡	2,059.97㎡
Total floor space	8,557.69㎡	10,197.08㎡
Open	April 2002	April 2003
When preparing large exhibitions	January 2008	June 2021

# Facility Information

## ● Open hours

9:30 – 17:30 (admission until 16:30)

## ● Closed days

Every Monday (or the following weekday if Monday is a national holiday or substitute holiday)

During the year-end and New Year holidays

※ Open throughout Golden Week Holidays (from April 28 to May 5)

※ Closed days are subject to change. For more information, visit our website.

## ● Admission fees

	Adults	College students	High school Students and younger
ALL Floors	¥600 <sub>(450)</sub>	¥450 <sub>(350)</sub>	Free
Only East Bldg.	¥300 <sub>(200)</sub>	¥200 <sub>(150)</sub>	

[Disabled Persons]

	Adults	College students	Seniors aged 70 and over
ALL Floors	¥150 <sub>(100)</sub>	¥100 <sub>(50)</sub>	ALL Floors ¥300 <sub>(200)</sub>
Only East Bldg.	¥50 <sub>(50)</sub>	¥50 <sub>(30)</sub>	Only East Bldg. ¥150 <sub>(100)</sub>

※ ( ) shows fees for groups of 20 or more

※ Free admission every 17th of the month. 18th of the month if the DRI is closed on the 17th.

## ● Required time to view exhibits

About 1 to 2 hours (The required time to view the exhibits varies with what you want to see. Re-entry is not allowed.)

## ● Application for visit

- Groups of 20 or more or people coming by charter bus must book in advance.
- If you want to watch a scheduled video at a set time, please book in advance.
- Reservations are accepted on the first day of the month six months prior to the date of the visit. (For more information, please check the Reservation Start Date on our website.)  
Web reservations start at 10:00 a.m. Reservations are on a first-come, first-served basis.

## ● Charged parking space

	Up to 1 hour	Up to 2 hour	Up to 3 hour	
Visitors	¥250	¥400	¥500	¥200 every 30 minutes
Other than visitors	¥400	¥200 every 30 minutes		

※ Please show your parking ticket at the General Information desk.

※ The parking discount is not available for just the restaurant and free area.

## ● Bus parking area (Fee charged and by reservation only)

Please take an advanced booking for waiting space when booking for viewing.

## ● Cafeteria Restaurant & Museum Shop

The restaurant (approx. 60 seats) and museum shop are located on the south side of the first floor of the East Building.

※ For more information, visit our website.

## ● Museum rules

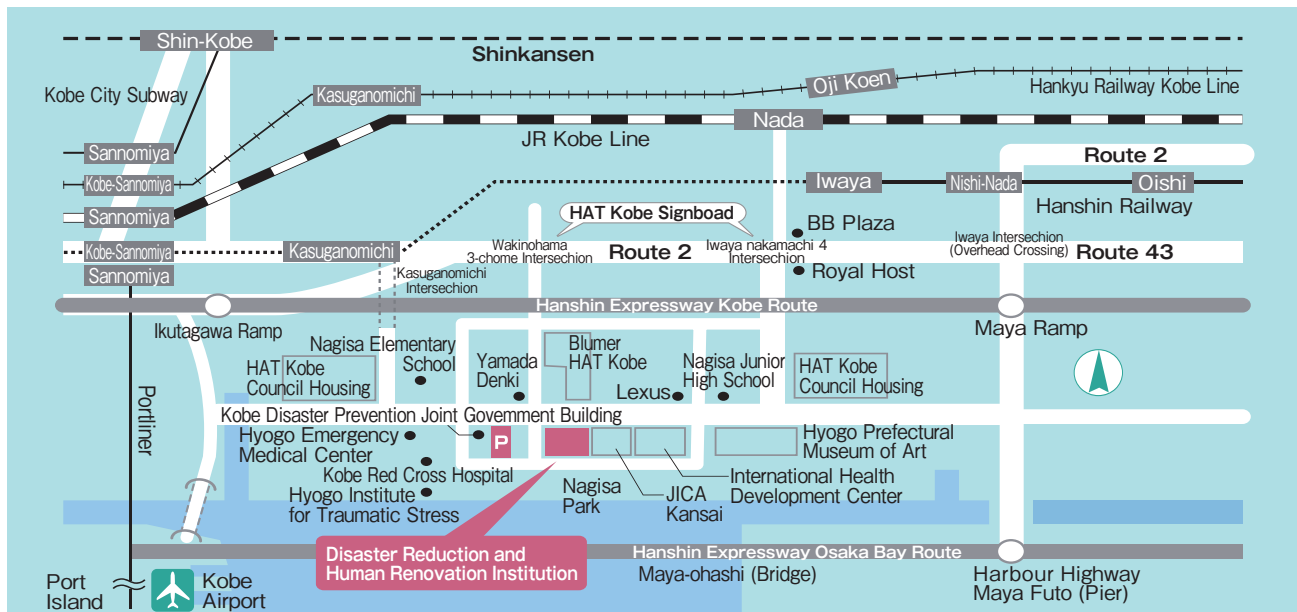
- Smoking is not allowed in the museum.
- The use of cameras and video cameras is not allowed in some areas of the buildings.
- Please do not use mobile phones. Food and drink are allowed only in the restaurants.
- If you are under the influence of alcohol or disturb other visitors, you may be asked to leave.
- You can visit our website and Instagram by scanning the QR codes below.



Website



Instagram



## ● Access

### Railways

- From Hanshin IWAYA Station / KASUGANOMICHI Station: About 10 minutes' walk southbound.
- From JR NADA Station, South Exit: About 12 minutes' walk southbound.
- From Hankyu OJI KOEN Station, West Exit: About 20 minutes' walk southbound.

### Bus

- Hanshin Bus: 14 min. from JR Sannomiya Station to DRI
- Kobe City Bus (Route 101): About 17 min. from JR Sannomiya Station to HAT Kobe/DRI
- Kobe City Bus (Route 29): JR Sannomiya Station  
A.M.: About 24 min. (Sannomiya → Maya Futo (Pier) → HAT Kobe)  
P.M.: About 15 min. (Sannomiya → HAT Kobe → Maya Futo (Pier))

### Car

- From the MAYA Ramp on the Hanshin Expressway Kobe Route: About 4 minutes.
- From the IKUTAGAWA Ramp on the Hanshin Expressway Kobe Route: About 8 minutes.
- From Hankyu/Hanshin KOBE-SANNOMIYA Stations / JR SANNOMIYA Stations: About 10 minutes (via Route 2).
- From JR SHIN-KOBE Shinkansen Station: About 15 minutes.

### From Kobe Airport

- By Portliner, KOBE AIRPORT Station to SANNOMIYA Station: About 18 minutes.
- From there, transfer to bus or train as listed above.
- By Car: About 20 minutes via Route 2.

The West Building is lit up from sunset to 20:00 everyday. The theme of the illumination varies with each month.



(September's theme: Moonlit night)



Public Interest Incorporated Foundation Hyogo Earthquake Memorial 21st Century Research Institute

**Disaster Reduction and Human Renovation Institution**

1-5-2, Wakinohama Kaigan-dori, Chuo-ku, Kobe City 651-0073 (in HAT Kobe)

TEL.078-262-5050 (Exhibition room)

URL: <https://www.dri.ne.jp/en/>

TEL.078-262-5067 (Business Section)

TEL.078-262-5502 (Operation Section)

TEL.078-262-5066 (Promotion Section)

TEL.078-262-5058 (Library Section)

2024.4